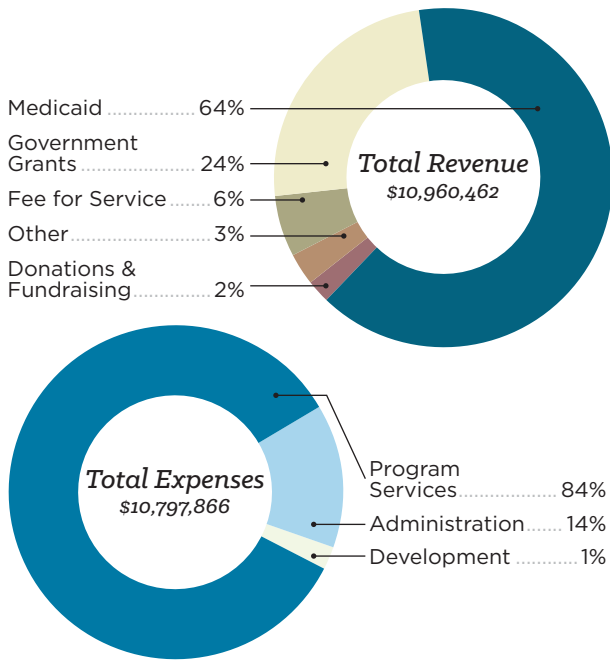


# 2018 Financial Summary



# Our Impact 2018

Education  
—  
Employment  
—  
Healthy Living

## 2018 Board of Directors

- |                       |                          |
|-----------------------|--------------------------|
| Anne Babcock-Stiner   | Tina Motiwala            |
| Lori Barnard-Northrup | Matt Perdue              |
| Matthew Crowley       | Mary Richardson          |
| Dr. Lia Tinkelman     | Cheryl Riley             |
| Festenstien           | Stephen G. Schwarz, Esq. |
| Carrie Fuller-Spencer | Laura Segave             |
| George Gray           | Alan Sheldon             |
| David Landon          | Mary Beth Speicher       |
| Juanita Lyde          | Lisa Stephenson          |
| Timothy McCauley      | Paul Visca               |
| Amy Mihalakas         | Bonnie Watson            |
| Robert S. Moore       |                          |



Colin Garwood, President/CEO (left),  
with Matt Perdue, Board Chair



# 4,207

people worked with us to improve **educational outcomes** for their children or students

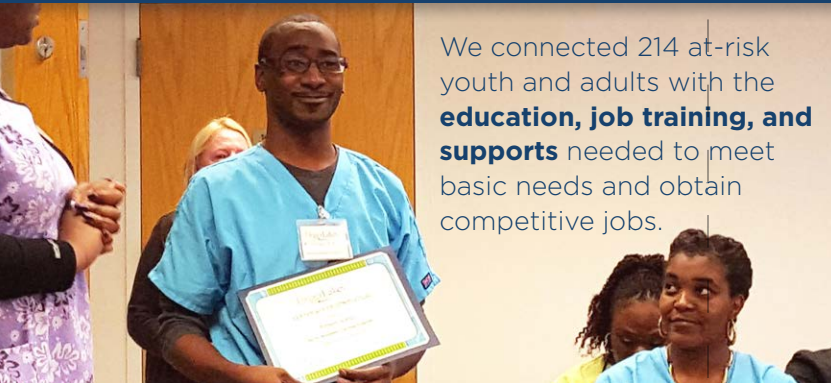
# 589

people developed **job skills**, completed **internships**, or obtained competitive **employment**

# 2,031

people partnered with us for the **supports and opportunities** they need for **healthy living**

In total, Starbridge served **more than 10,000 people** during 2018.



We connected 214 at-risk youth and adults with the **education, job training, and supports** needed to meet basic needs and obtain competitive jobs.

Adults in our **residential services** are supported to learn independent living skills, engage in community activities, and lead healthy, fulfilling lives.



Parents improved their advocacy skills and worked with schools constructively to **meet their children's needs** and help them succeed.

Over 50% of young adults in our **internship program** are hired at the end of their internship. Other participants moved on to supported coaching and then proceed to jobs.



Our **fiscal intermediary service** grew by 7%, opening up self-directed living to more people in the Finger Lakes region.

*Thank you for your support, which helps make our impact possible!*

For a list of donors, please see:  
[www.starbridgeinc.org/2018donors](http://www.starbridgeinc.org/2018donors)

